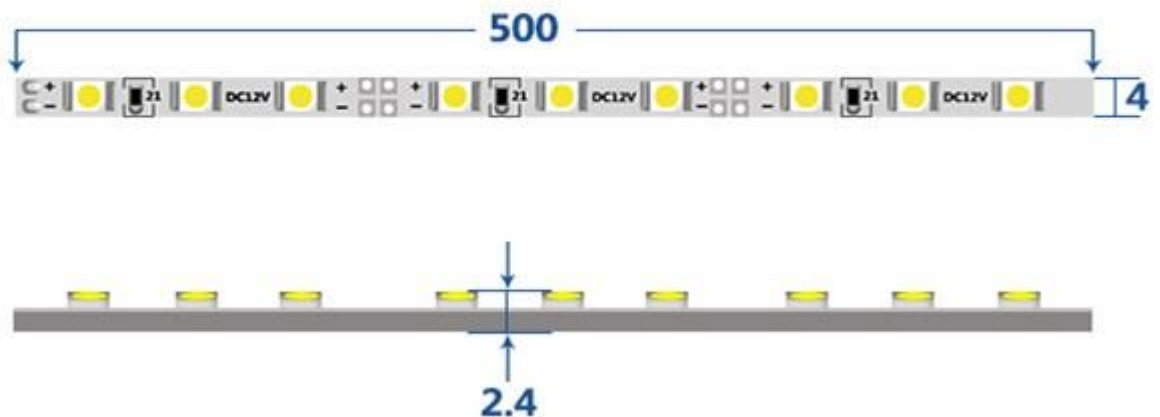


## 5M SMD 3528 Waterproof led strip lights

Ultra thin customized SMD 3528 Led rigid Bar Strip for indoor led light box.

### Dimension ( mm )



### Product Features

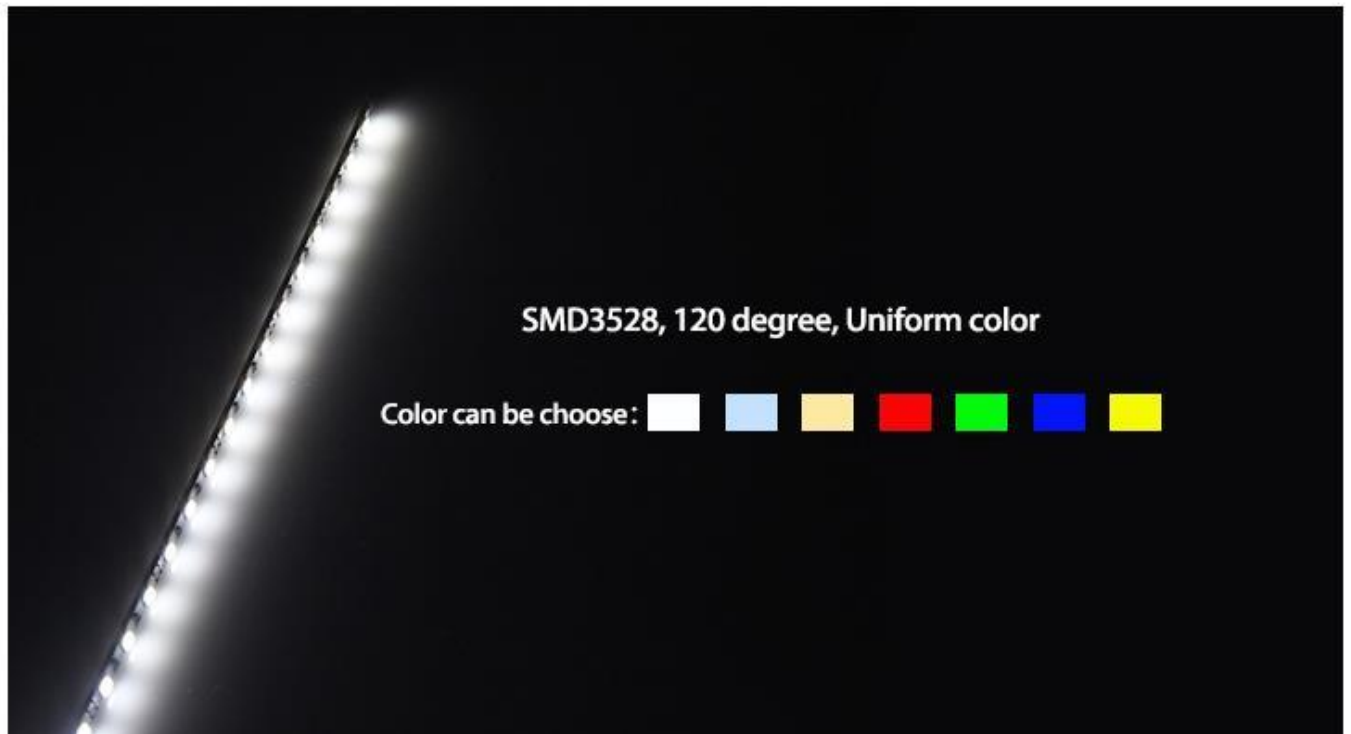
1. Wide applicability, easy to install and maintain;
2. Extremely luminous, with wide viewing angle;
3. PCB base board, unique waterproof technique;
4. Energy saving and environmental conservation, long lifespan;
5. Operation low voltage (DC12V, DC24V) for human safety, various colors available.
6. 3 Years Warranty.

### SMD 3528 LED Strip Technical Data

Model No:	AL-3528	Brand:	ALLIGHT
Input Voltage:	DC 12V / 24V	LEDs:	SMD2835/ 3528
Total Wattage:	4.8W/M	Color Temp:	2000K/3000K/4500K/6000K/RGB
CRI(Ra):	Ra80, Ra90, Ra95	Length:	500mm (16.4ft) per roll/ customize
Luminous flux:	7-8LM/ 22-25LM per led	PCB Width:	8mm
No. of LEDs:	Customer	Operating	-30 °C ~ 70 °C

	customization	Temperature:	
Beam Angle:	120 degree	Waterproof type:	IP20/IP65/IP66/IP67/IP68
Warranty:	3 Years Warranty	Certification:	ISO, SGS, ROHS listed

## Details



### Installation Instructions

1. Clean the surface you intend to stick the light strip to Peel off the backing strip off the 3M adhesive tape
2. Press and hold the light strip firmly against the surface
3. Plug your light strip into a compatible 12V/24V DC power supply or dimmer
4. Connect your power supply to a wall outlet Enjoy your beautiful LED light strip!
5. Our light strips are also cuttable and connectable with extension cables.

## How to install the LED strip light

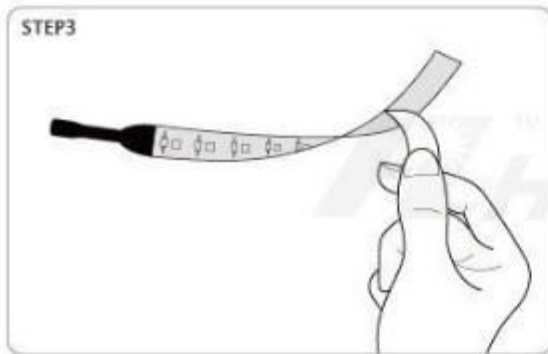
### How to INSTALL

#### STEP1

Please prepare all the required accessories before connecting and wiring (see the Parameter and Accessories Details table). If lack something, Please make another order of accessories.

#### STEP3

Tear off the covering of LED strip light.

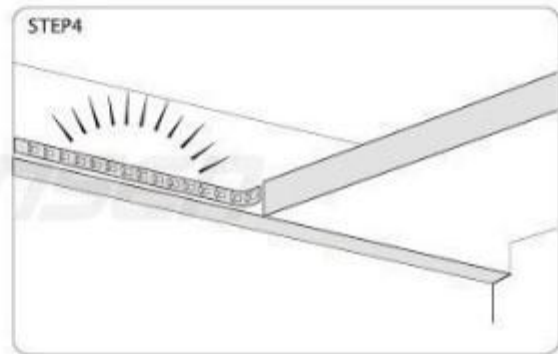


#### STEP2

If you want to cut this strip light, please refer to the detail instructions of LED Strip DIY.

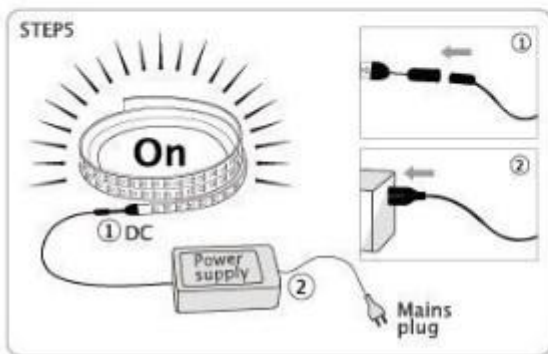
#### STEP4

Stick up the adhesive strip onto where you want to use it.



#### STEP5

Connect the DC plug of adapter into the DC port of LED strip, and connect another plug of adapter into the mains socket.



### FAQ

Q: What is your MOQ for this product?

A: 100 meter. 1m sample is ok.

Q: Which port do you ship from?

A: Shenzhen, China

Q: Is custom logo/design workable?

A: Yes. We're experienced in OEM. Logos can be done by engraving, stamping, silk printing, pad printing, offset printing, etc.

Q: What is your accepted payment methods?

A: Western Union, Paypal(for sample fee only), T/T,LC

Q: What is the price for your this product?

A: Please kindly provide more detailed information, like quantity needed, unit package requirement etc. We will process your inquiry ASAP.

**We are professional led strip manufacturer in China, any customized project we all can provide. Waiting for your inquiry!**

**WELCOME TO CONTACT US>>>>WWW.ZHIDINGLED.COM**



Oversea Sales Manager

Elsa Xiao

E-mail:sales@zhidingled.com

Skype: elsa.xiao0418

Mobile: 86-13412570091

WhatsApp: 86-13412570091

Tel: 86-769-22665151

Fax:86-769-22665155